

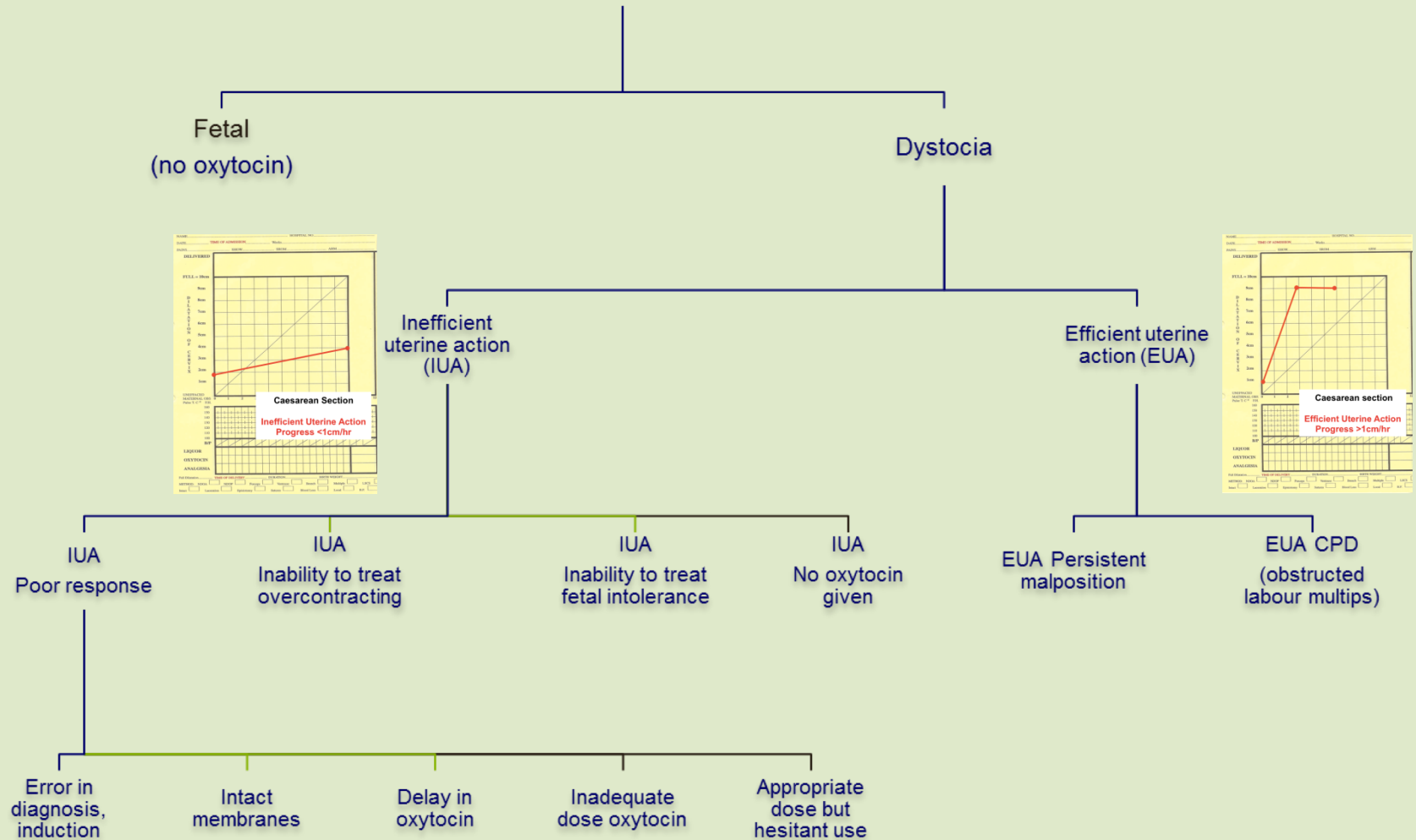


## WHO Statement on caesarean section rates

AP Betran,<sup>a</sup> MR Torloni,<sup>b</sup> JJ Zhang,<sup>c</sup> AM Gülmezoglu,<sup>a</sup> for the WHO Working Group on Caesarean Section\*

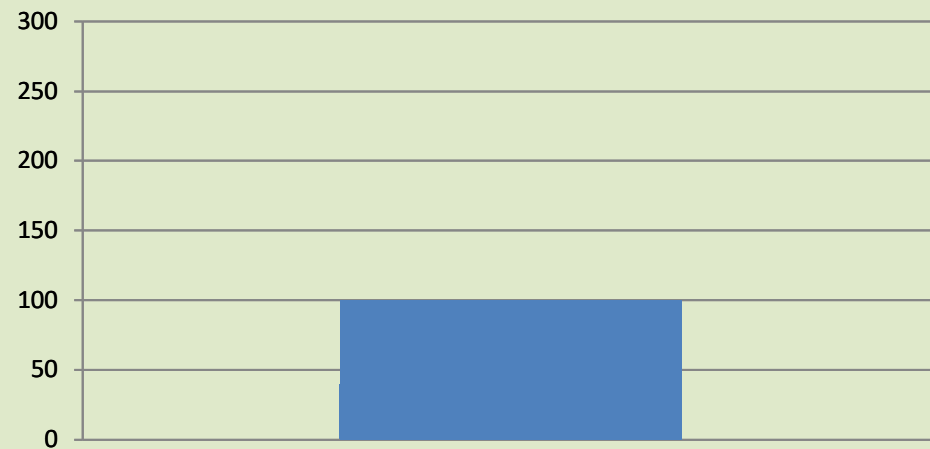
WHO will guide and support countries in the use, implementation and interpretation of the classification so that we can start comparing CS rates in a meaningful, targeted, transparent and useful manner. By endorsing the Robson classification, this Statement should become a catalyst for action. The time has come to put the debate about the preferable rate of CS on hold. Let's start to collect data uniformly so that in the near future we will be able to move our focus from CS rates at population level to monitoring and discussing CS rates and outcomes in each group of the Robson classification. Only then will we have the data and evidence that will lead us more clearly to actions to improve care.<sup>15</sup> Ultimately, we hope the debate can recommence with more valuable, solid and informative data to support our discussions.

# Classification of CS after spontaneous or induced labour

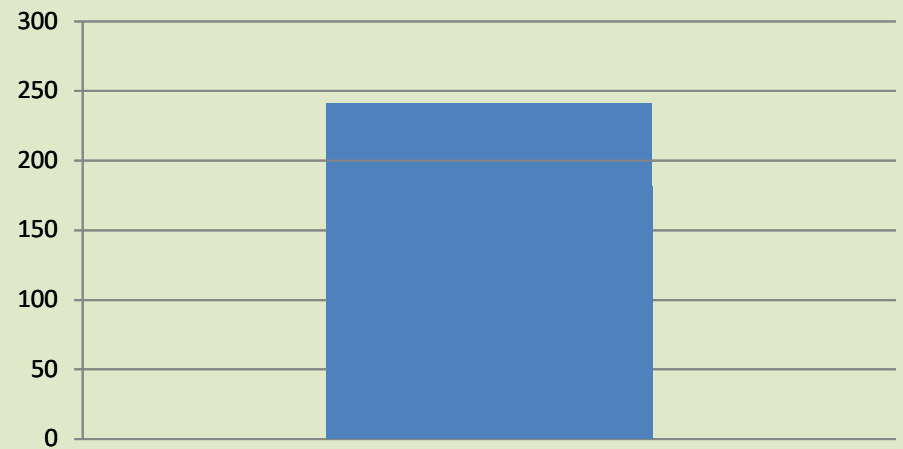


# Före

**HFA**

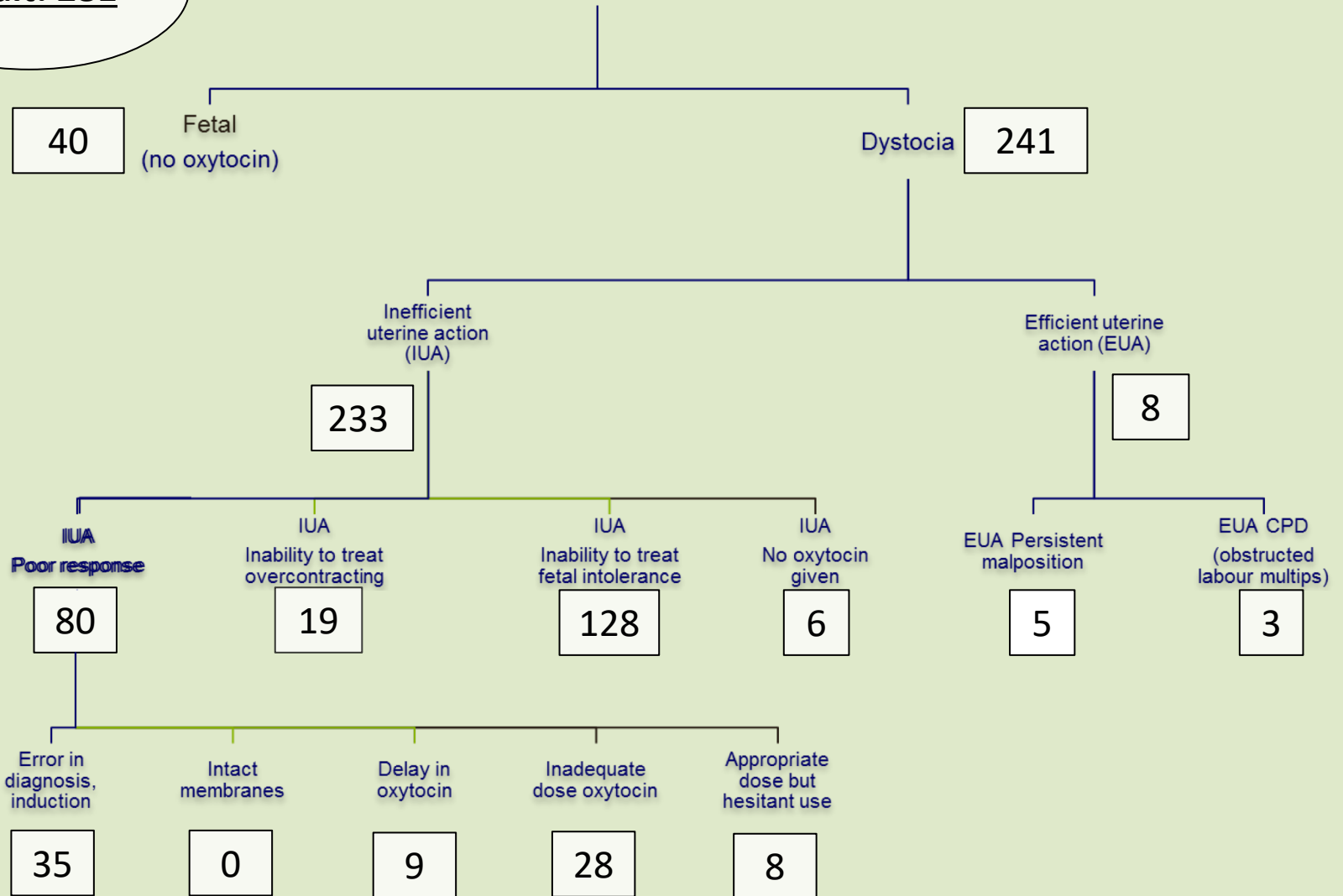


**Dystoci**



# Classification of CS after spontaneous or induced labour

**Total: 281**



## Classification of CS after spontaneous or induced labour

